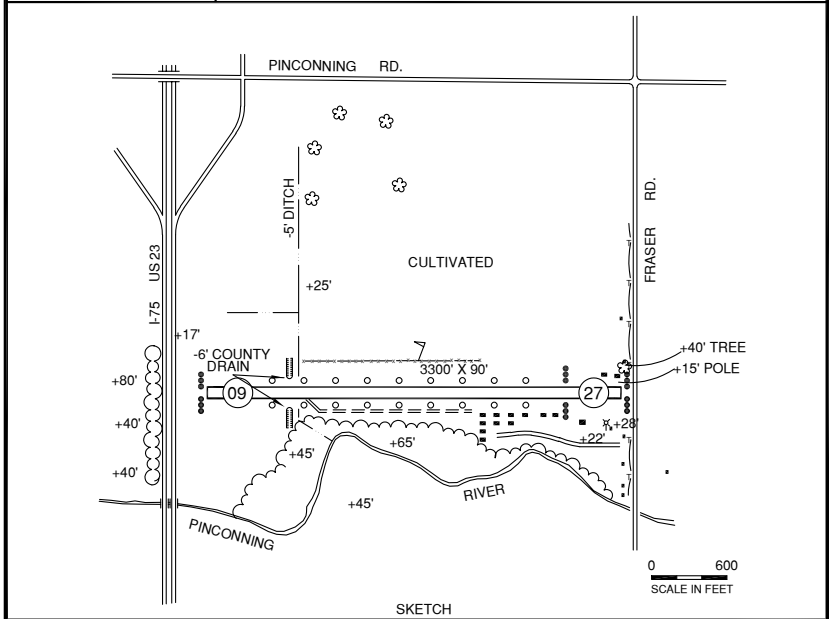
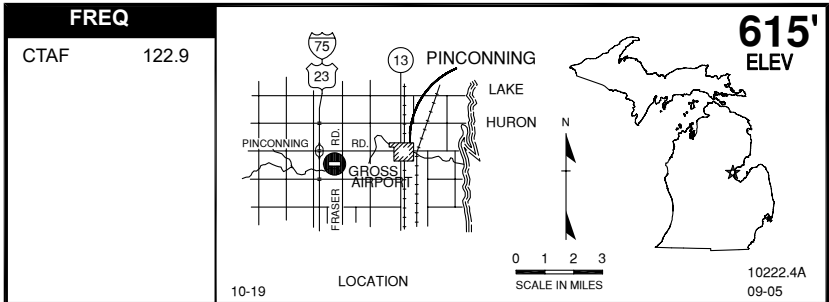


PINCONNING, GROSS (52I)



RWY LENGTH BEYOND DISPLACED THR
09/ —
27/ 2123'

COORDINATES
43° 50.81'N
084° 00.68'W

License
Basic Utility

FM CITY: 3.0 mi W
LGT: LIRL* PCL— key mic 5X CTAF.
MGR: James M. Klein
Michael Hartman, Asst
PH: 989-239-9878
FBO: None
ATND: Intmt or by ph req**

NAV AIDS: 112.9 (MBS) 013° 18.0 NM to fld.
FUEL: None, Fuel avbl emerg only.
RPR: None
WX: None
SNW RMVL: Ireg***
TRNSP: By prior arnrgmt
MEALS: 0.5 mi, CC
RON: In town, 2.0 mi, CC

- *Lights avbl only when field usable.
- Admin bldg access—depress V, then simultaneous III-II, then I.
- **For arpt atndt call 989-239-9878.
- *** For snow rmvl call 989-708-7583.
- Ultralights use left tfc rwy 9/27 with a 500' agl TPA.
- -6' ditch 15' west of rwy 09.
- Ag ops summer mos.